

P6

Parents' Briefing

24 Feb 2021

Overview of Briefing

- Introduction of Level Teachers
- Communication with School
- Our Focus
- Level Highlights
- PSLE Matters
- DSA for Secondary Schools
- Supporting your Child

Introduction of Level Teachers

PRIMARY 6 FORM TEACHERS

CLASS

FORM TEACHERS

P6 SINCERITY (6S)

MR MOHAMAD TAIB

MDM TENG YAN LING

MR CHARLES YE

P6 PATIENCE (6P)

MR SEAN TENG

MDM AMANDA TAN

P6 RESOURCEFULNESS (6R)

MR ANWARUL

MDM EUNICE LIUU

P6 INITIATIVE (6IN)

MS SUNITA MOHANDAS

MRS CHAN CHENG GUAN

P6 GENEROSITY (6G)

MR LYNDON LONG

MS ONG BEE HUA

P6 DISCERNMENT (6D)

MDM NOR AZILA

MDM TAN JOO YAN

Communication **with School**

Communication **PLATFORMS**

- Student Handbook
- Parents Outreach (newsletter)
- Letters to Parents
- **Parents Gateway**

Get in touch with:

- FTs and subject teachers
- **Year Head**

Our FOCUS

Secure Individual
Confidence

Cope-ability

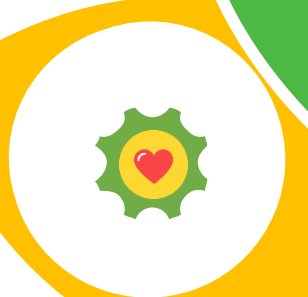
Leader of Self-Worth

Creativity

Cohesion

Significant Citizen

**Care-
nectedness**



Hallmark of Our Springdalite Graduates



3 Signature Programmes



Applied Learning
Programme (**ALP**)

**Critical &
Inventive
Thinking**



Learning for Life
Programme (**LLP**)

**Student
Leadership**



Character Development
Programme (**CDP**)

**Character
Development**

P6

Level Highlights

Level **HIGHLIGHTS**

- Learning Journeys (virtual)
- Values-In-Action
- Career Awareness Day (virtual)
- Sec 1 Road Show
- Post Exam Activities & P6 Graduation Day

PSLE Matters

IMPORTANT dates

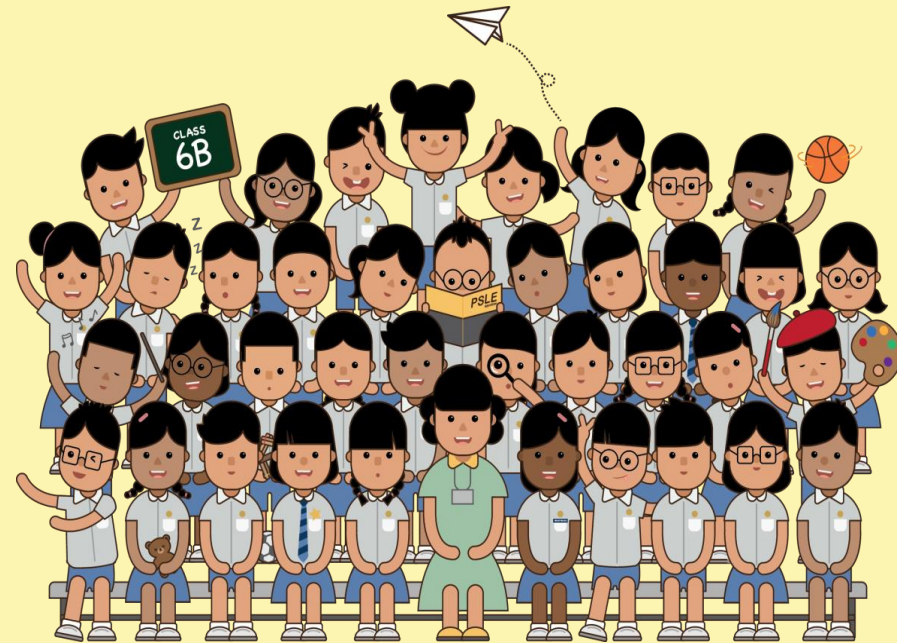
Event	Dates
PSLE Registration	Mon, 08 Mar - Wed, 24 Mar
PSLE Oral	Thu, 12 Aug - Fri, 13 Aug
PSLE Listening Compre	Fri, 17 Sep
Written Papers	Thu, 30 Sep - Wed, 06 Oct
PSLE Results & S1 Posting	First week of Nov hols

PSLE Scoring & S1 Posting

CHANGES TO THE PSLE SCORING & S1 POSTING FROM 2021

IT'S PART OF
A BIGGER STORY

PARENTS ENGAGEMENT SESSION



OVERVIEW

All students

1. How PSLE Scoring Works
2. How S1 Posting Works
3. Presentation of results in Achievement Levels
4. Subject-based Banding (Primary Schools)
 - Scoring for Foundation Subjects
5. **[New]** Indicative Achievement Level (AL) Cut-Off Point Ranges for Different School Types
6. **[New]** Subject-Based Banding (Secondary) under the AL Scoring System

Students taking HMTL

- Eligibility for Higher Mother Tongue Language (HMTL) in Secondary School
- Use of Higher Chinese Language (HCL) for Admission to SAP Schools

MTL-exempt, AsL or FL students

- Scoring for Mother Tongue Language (MTL)-exempt students and students studying an Asian Language/ Foreign Language (AsL/FL) in lieu of an MTL

THE PSLE CHANGES ARE PART OF A BIGGER STORY

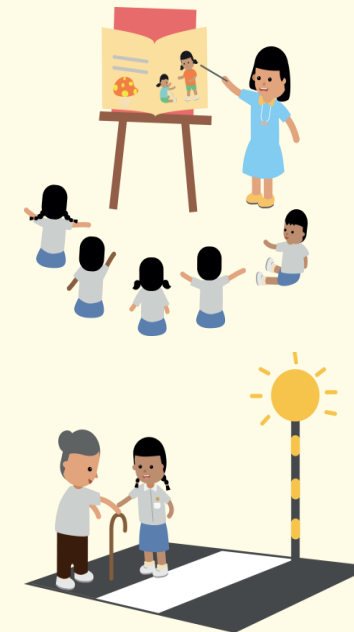
Over the years, we have been fine-tuning the education system to help our students discover and develop their strengths and interests, while moving away from an over-emphasis on academic results.

Our PSLE scoring changes aim to:

- Reduce fine differentiation at a young age
- Recognise students' level of achievement, regardless of how their peers have done

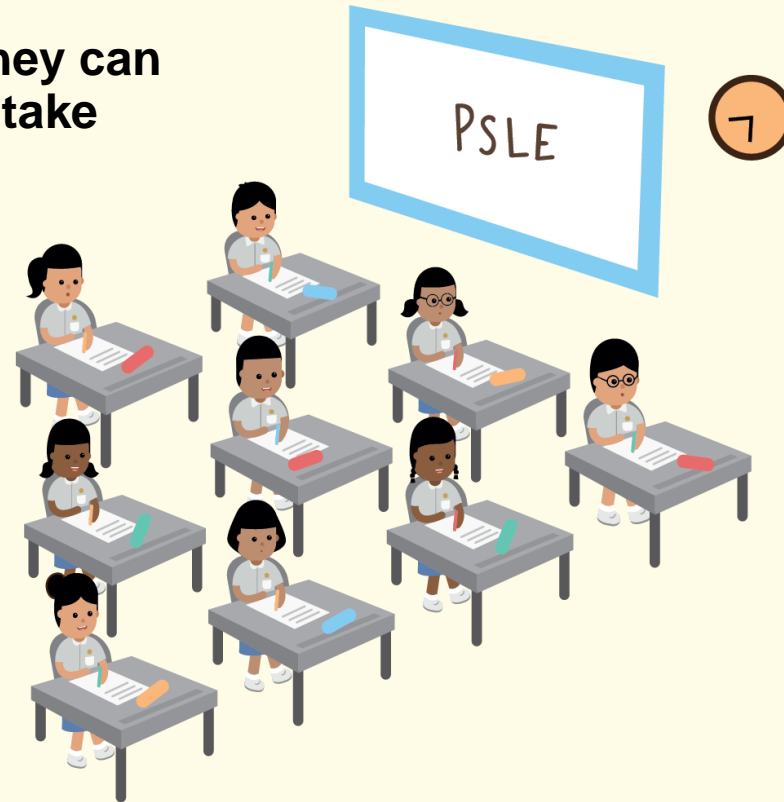
The changes will not affect the curriculum and subjects tested at PSLE

- However, MOE does review the curriculum regularly to ensure that it is relevant and up-to-date. This will continue as per current practice.



THE PSLE REMAINS A USEFUL CHECKPOINT

- To understand where our children are at in their learning after six years of primary school
- Gauge their learning needs so that they can progress to a secondary school and take subjects at a suitable level



HOW PSLE SCORING WORKS



WIDER SCORING BANDS


AL	RAW MARK RANGE
1	≥ 90
2	85 – 89
3	80 – 84
4	75 – 79
5	65 – 74
6	45 – 64
7	20 – 44
8	< 20

Reflects a student's individual level of achievement

WIDER SCORING BANDS

- Obtained by adding the ALs of four subjects.
- PSLE Score ranges from 4 to 32, with 4 being the best.
- Students will be placed in secondary school courses based on their PSLE score – Express, Normal (Academic) or Normal (Technical).

ENGLISH	AL3
MOTHER TONGUE	AL2
MATHEMATICS	AL1
SCIENCE	AL2
<hr/>	
PSLE SCORE: 8	



PLACEMENT OUTCOME	PSLE SCORE
EXPRESS	4 – 20
EXPRESS / N(A) OPTION	21 – 22
N(A)	23 – 24
N(A) / N(T) option	25
N(T)	26-30, with AL7 or better in both EL <u>and</u> MA



WHY ARE THE AL BANDS NOT EVEN?

AL	RAW MARK RANGE
1	≥ 90
2	85 – 89
3	80 – 84
4	75 – 79
5	65 – 74
6	45 – 64
7	20 – 44
8	< 20

AL bands and mark ranges are set based on the **learning objectives of the curriculum, and mirror the way we learn:**

- When we learn something new, after some initial practice, we often find ourselves improving significantly.
- But as we get better, the improvements become small steps, and finally, as we reach a high level, we inch just a little further, even after much learning and practice.

The ALs were designed to reflect this reality of learning. They help educators, students, and parents know **how ready students are to access the curriculum at the next level.**



IN SUMMARY...

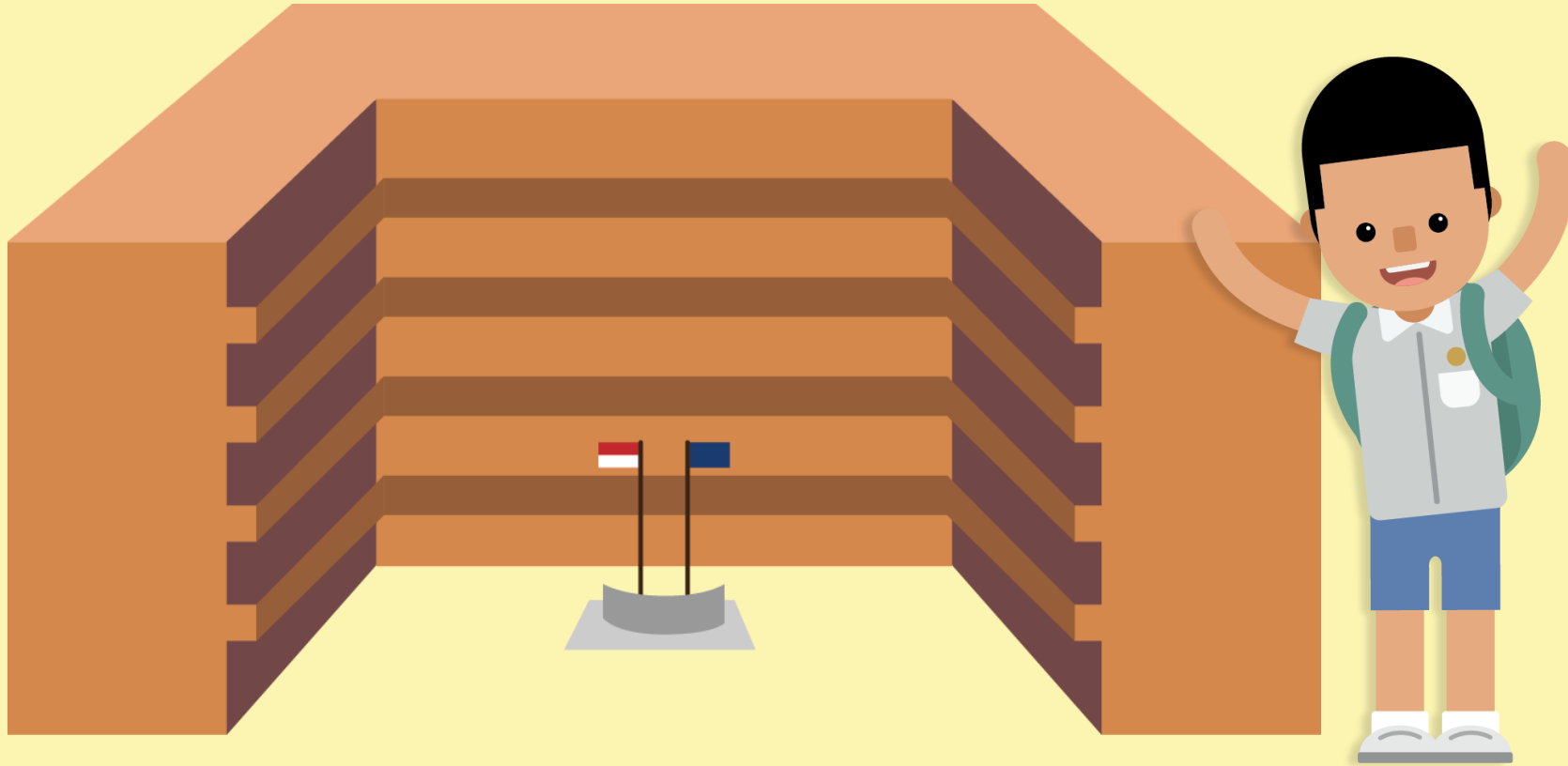
WHAT REMAINS

- Same 4 subjects are tested, and scores are awarded to guide students' choices for the next stage of their education journey
- Curriculum is continually updated. This is not related to the PSLE scoring and S1 posting changes.

WHAT CHANGES

- The T-score Aggregate will be replaced by the PSLE Score, to reduce the fine differentiation of our students at a young age based on exam scores.
- Students will be assessed based on their own achievement, instead of comparing them to their peers.

HOW S1 POSTING WORKS



CHOICE ORDER OF SCHOOLS WILL MATTER MORE

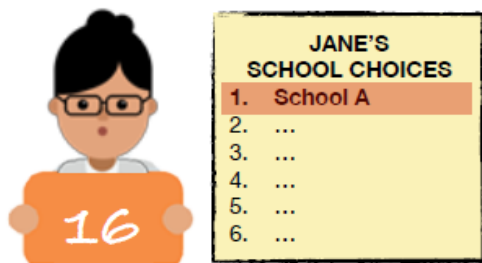
- Students will continue to be posted to a secondary school based on academic merit i.e. overall PSLE score.
- If two or more students with the same PSLE Score vie for the last remaining place in a school, tie-breakers will be used in the following order:
 1. CITIZENSHIP
 2. CHOICE ORDER OF SCHOOLS (NEW for 2021 PSLE cohort onwards)
 3. COMPUTERISED BALLOTING



EXAMPLE:

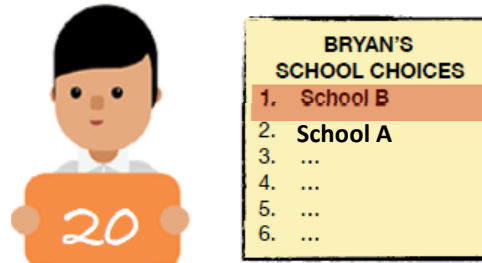
4 students - Jane, Bryan, Mary and John, are vying for the last places in School A and School B.

Jane
Singapore Citizen



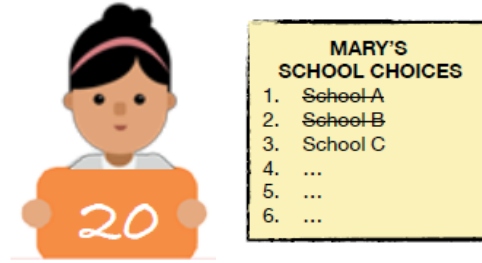
Jane is a Singapore Citizen with a PSLE score of 16. Her school choices are: 1. School A, 2. ..., 3. ..., 4. ..., 5. ..., 6. ...

Bryan
Singapore Citizen



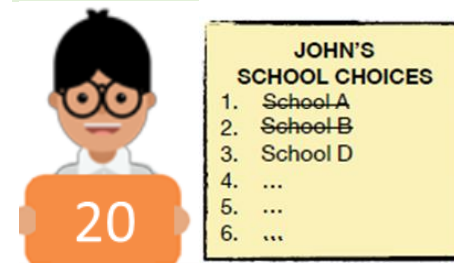
Bryan is a Singapore Citizen with a PSLE score of 20. His school choices are: 1. School B, 2. School A, 3. ..., 4. ..., 5. ..., 6. ...

Mary
Singapore Citizen



Mary is a Singapore Citizen with a PSLE score of 20. Her school choices are: 1. School A, 2. School B, 3. School C, 4. ..., 5. ..., 6. ...

John
Singapore PR



John is a Singapore PR with a PSLE score of 20. His school choices are: 1. School A, 2. School B, 3. School D, 4. ..., 5. ..., 6. ...

Students with better scores will be posted first

Jane will be posted first as she has a better PSLE score, and will be posted to School A.

As Jane has taken that last place in School A, Bryan, Mary and John, having the same PSLE score, will vie for the last available place in School B.

**Tie-breaker 1:
Citizenship**

Bryan and Mary are Singapore Citizens and will have a priority to enter School B.

John will be tie-broken out as he is a Permanent Resident. With no places in School B, John will be considered for School D.

**Tie-breaker 2:
Choice order of schools**

As Bryan ranked School B higher than Mary in his choice order of secondary schools, he will be posted to School B.

Since the last place of School B is taken by Bryan, Mary will be considered for School C.

**Tie-breaker 3:
Computerised balloting**

SCORING FOR FOUNDATION LEVEL SUBJECTS



FOUNDATION LEVEL SUBJECT GRADES TO BE LESS FINELY DIFFERENTIATED

- Foundation subject grades will be graded in 3 scoring bands from AL A to C.
- Like standard subject ALs, the foundation subject **ALs** will **reflect a student's level of achievement.**

Foundation Level AL Reflected on Result Slip	Foundation Raw Mark Range
A	75 – 100
B	30 – 74
C	< 30

FOUNDATION LEVEL SUBJECT GRADES

For the purpose of S1 posting, foundation level AL A to AL C will be **mapped to AL 6 to AL 8 of standard level subjects** respectively, to derive a student's overall PSLE score.

Foundation Level AL Reflected on Result Slip	Foundation Raw Mark Range	Equivalent Standard Subject AL	Standard Raw Mark Range
A	75 – 100	6	45-64
B	30 – 74	7	20-44
C	< 30	8	<20

SCORING OF FOUNDATION SUBJECTS FOR S1 POSTING

- PSLE score is the sum of the four AL scores across his/her standard and foundation subjects.
- Students taking foundation subjects are **eligible for the express course, as long as they meet the course placement criteria.**
- With full subject-based banding in secondary schools, students may also take subjects at a higher level for those that they are strong in.

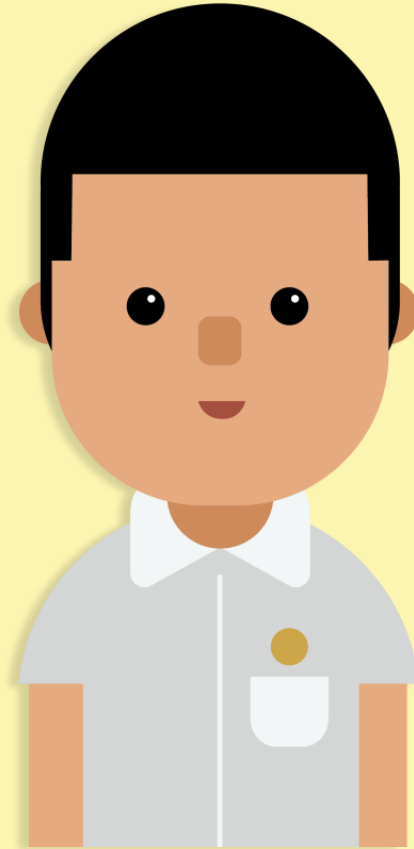
ENGLISH	AL3
FOUNDATION MOTHER TONGUE	ALB
FOUNDATION MATHEMATICS	ALB
SCIENCE	AL5

PSLE SCORE: 22



PLACEMENT OUTCOME	PSLE SCORE
EXPRESS	4 – 20
EXPRESS / N(A) option	21 – 22
N(A)	23 – 24
N(A) / N(T) option	25
N(T)	26 – 30, with AL7 or better in both EL <u>and</u> MA

ELIGIBILITY FOR SECONDARY SCHOOL HIGHER MOTHER TONGUE LANGUAGE (HMTL)



ELIGIBILITY FOR HMTL IN SECONDARY SCHOOLS

- The eligibility criteria for taking HMTL is intended to ensure that **students can cope with the higher academic load**, and takes reference from the current criteria.

ELIGIBILITY CRITERIA FOR SECONDARY SCHOOL HMTL

(i) PSLE Score of 8 or better

OR

(ii) PSLE Score of 9 to 14 inclusive; and attain

- AL1 / AL2 in MTL or
- Distinction / Merit in HMTL







- For students who do not meet the above criteria, secondary schools will continue to **have the flexibility to offer HMTL to students, if they are assessed to have high ability and interest** in MTL and are able to take HMTL **without affecting their performance in other subjects.**

USE OF HCL FOR ADMISSION INTO SAP SCHOOLS

New System

The HCL posting advantage for entry to SAP schools will continue

- Students will be ranked taking into account their performance in HCL.
- This posting advantage applies before the tie-breakers for S1 posting.

1st		7	NO HCL
2nd		8	DISTINCTION
3rd		8	MERIT
4th		8	PASS
5th		8	NO HCL
6th		9	DISTINCTION

INDICATIVE ACHIEVEMENT LEVEL (AL) CUT-OFF POINT (COP) RANGES FOR DIFFERENT SCHOOL TYPES



INDICATIVE ACHIEVEMENT LEVEL (AL) CUT-OFF POINT (COP) RANGES FOR DIFFERENT SCHOOL TYPES

Government & Government-aided Schools	Course	Indicative AL COP range for 2019 PSLE
<ul style="list-style-type: none"> • mainstay of our education system • offer high-quality education at standardised fees • offer a range of electives, applied subjects and student development programmes 	Express (Integrated Programme (IP))	7 – 9
	Express (O-level)	8 – 22
	N(A)	22 – 25
	N(T)	26 – 30

INDICATIVE ACHIEVEMENT LEVEL (AL) CUT-OFF POINT (COP) RANGES FOR DIFFERENT SCHOOL TYPES

Autonomous Schools	Course	Indicative AL COP range for 2019 PSLE
<ul style="list-style-type: none"> • Government or Government-aided schools • provide a wider range of programmes that seek to enhance students' learning experiences and develop their talents 	Express (IP)	7 – 9
	Express (O-level)	8 – 16
	N(A)	22 – 25
	N(T)	26 – 29

Independent schools	Course	Indicative AL COP range for 2019 PSLE
<ul style="list-style-type: none"> • have the autonomy to develop their curriculum and programmes to cater to their students' diverse learning needs. 	Express (IP)	6 – 8
	Express (O-level)	8 – 10

CHOOSING A SUITABLE SECONDARY SCHOOL



DISCUSS WITH YOUR CHILD

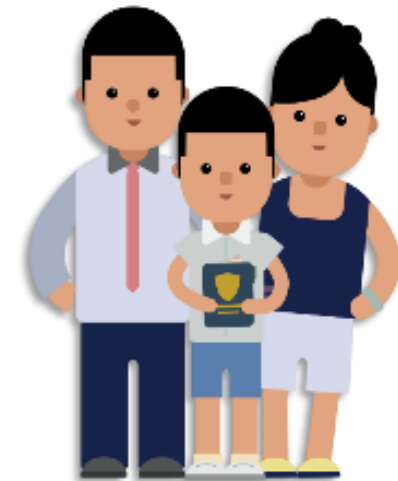
- Consider your child's learning style, strengths and interests when making school choices in order to find a school that would help the child learn and thrive best.
- Discuss the options with the child, with the following considerations:
 - **Values:** What is the school's culture and ethos?
 - **Learning environment:** Is the school's learning environment right for the child?
 - **Distinctive programmes and CCAs:** Can the school support and develop the child's interests?
 - **Location:** Is it too far from home? How will the child get to school?



RESOURCES

PSLE-FSBB Microsite

<https://www.moe.gov.sg/microsites/psle-fsbb/index.html>

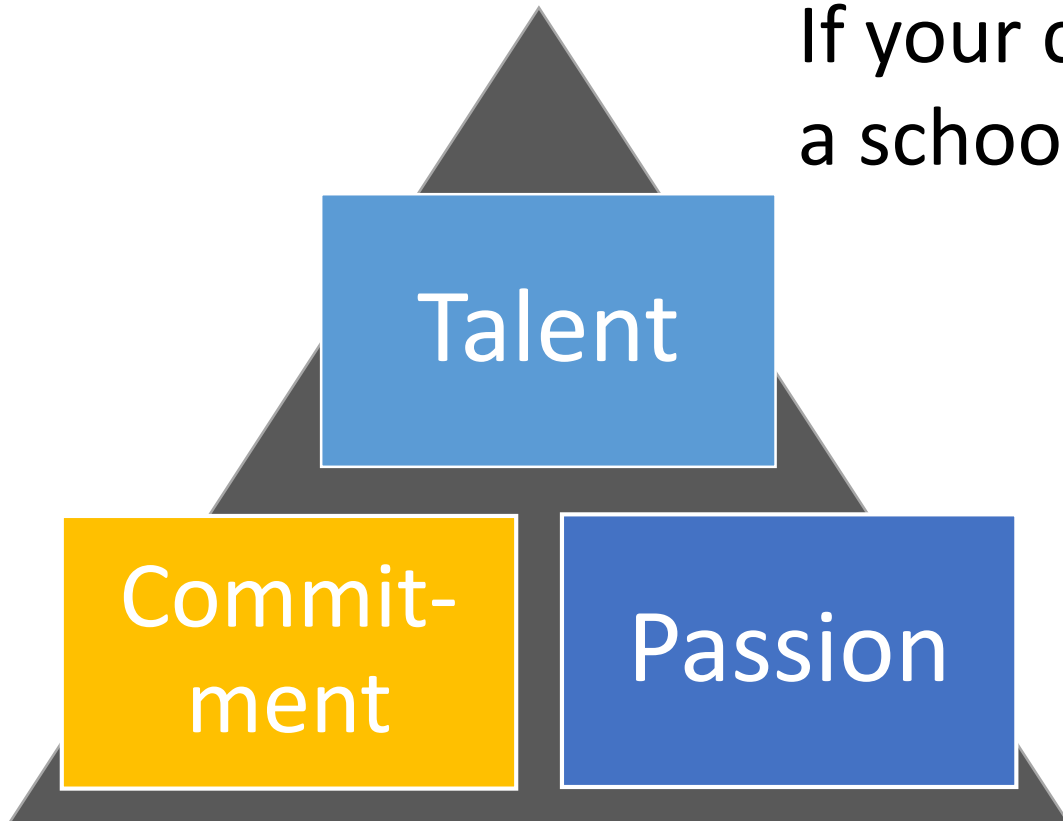


DSA for Secondary Schools

Direct School Admission - Secondary

- Secondary schools have flexibility to select a percentage of their students for admission via their own selection criteria
- Selection criteria can include diverse academic and non-academic achievements and talents

Is the DSA-Sec right for my child?



If your child has specific **talents** which a school offers the DSA-Sec in

And is **passionate** about and **committed** to developing his/her strengths and interests

DSA-Sec can support his/her development in that talent area.

Which school should my child apply to?

- Look for a school with **programmes that match your child's strengths and interests**
 - Schools are looking out for students whose interests and talents they can develop further.
 - Learn more about the secondary school's **pace of learning** and overall range of programmes
- **Get the latest information** about what each school offers by:
 - Visiting schools' websites
 - Attending schools' Open Houses to also experience their environments and cultures
 - Visiting the MOE's DSA-Sec website

DSA-Sec Application Portal

- Students will apply for DSA through a centralised **DSA-Sec Application Portal**, using a common application form.

What is the timeline for 2021 DSA-Sec?

Apply for DSA-Sec through [DSA-Sec Application Portal](#).

Rank your offers, if you receive offers from multiple schools

Mid June - Late August

Late-November

Early May - Early June
(4 weeks)

Late-October

Shortlisting and selection by secondary schools. Each secondary school has different selection criteria for its categories and programmes. Schools will inform you of the selection outcome **by Aug.**

You will know whether you have been allocated to a school through the DSA-Sec, at the same time you receive your PSLE results.

What are schools looking for?

- The selection process **differs** across schools, and across different DSA-Sec categories.
- Generally, schools are looking for candidates with:

Talent, passion, commitment

- Schools may look at **achievements** and **participation** (e.g. in Junior Sports Academy).
- Schools may also conduct tests, trials or selection camps to identify students with **strengths, or sound fundamentals and potential**, in particular areas.

Strong personal qualities

- Schools may look at **CCA records** and **VIA participation**.
- Schools may also conduct interviews.

Good academic fit

- Schools may look at **primary school results** to ensure students can benefit from the school's pace of learning.

What are the possible DSA-Sec outcomes?

- **Confirmed Offer (CO)** → Your child has a place reserved in the school, as long as his/her PSLE results qualify him/her for a course the school offers (i.e. Express, Normal (Academic) or Normal (Technical)).
- **Wait List (WL)** → Your child will be given a place in the school if other students with Confirmed Offers do not take up those offers, and if his/her PSLE results qualify him/her for a course the school offers. Allocation will be based on students' rank on the school's Wait List.
- **Unsuccessful** → Your child has not been given a place in the school. If your child still wishes to enter the schools he/she applied for, he/she can apply through the S1 Posting process using his/her PSLE results.

If my child have a DSA-Sec Confirmed Offer, does it mean that his/her PSLE results will not matter?

- Your child's PSLE results will still be **used to determine the secondary school course he/she is eligible** for (i.e. Express, Normal (Academic), Normal (Technical))
- Even if he/she has a Confirmed Offer, he/she **must qualify for a course offered by the school** to be admitted to the DSA-Sec school.

Example: Leo has a **Confirmed Offer** from Courage Secondary, which offers **the Express Course only**. However, Leo's PSLE results **qualify him for the Normal (Academic)** course. Hence, Leo will **not be able** to go to Courage Secondary through DSA-Sec. If he is not allocated a place in another DSA-Sec school whose CO/WL offer he had accepted at the School Preference stage, he will participate in the S1 Posting.

Where can I find more information on the 2021 DSA-Sec?

- Check the **MOE DSA-Sec website** for important dates and timelines, and for information on how DSA-Sec will be conducted.
- The updated 2021 DSA-Sec information will be published around April 2021.
- The MOE DSA-Sec website also contains information on DSA categories and secondary schools offering them.

Supporting your Child

Supporting **Our Students' Social-Emotional Well-being**

- Form Teacher Guidance Period and pupils' Grow and Glow Journal
- Motivational/Values Talk by Key Personnel
- Chit-chat sessions by Form teachers
- Support from School Counsellor

How to Support Your **Child**

- Providing your child a **balanced lifestyle** – exercise and recreation time should also be factored in his/her work schedule
- **Unconditional** love and acceptance
- **Communicating with your child** about and **involvement** in other aspects of his/her life

How to Support Your **Child**

- Ensuring that the children **spend their time wisely** and do monitor their **stress level**
- **Role modelling** so that the children have a more positive attitude to reading
- Monitoring **external sources of help** (if any) and check that they are value-adding to your child's learning

How to Support Your **Child**

- **Believe** in him/her
- **Encourage and Affirm** your child
- **Make time for** your child and take an **interest in your child's schoolwork**
- **Set realistic and positive target/expectations**

Working with **YOU**

- **Update us on what is happening** to your child at home so that we can provide the necessary support
- We will do our best to **support your child academically and where possible emotionally** and would **appreciate your support and understanding**
- **Be consistent in our messaging**

Conclusion

- We intend to **work with and build up your child's capacity** over the years
- We **appreciate their active participation** during and **regular attendance** of lessons
- We **continue to strive to partner you in realising your child's potential**

Contact Info

Year Head (Upper Primary):

Mdm Abidah Bibi Marikar



Email

abidah_bibi_marikar@moe.edu.sg



Phone

6315 7600



