



P5

Parents' Briefing

19 Feb 2021



Overview of Briefing

- Introduction of Level Teachers
- Communication with School
- Our Focus
- Level Highlights
- Subject Based Banding
- DSA for Secondary Schools
- PSLE Scoring and Sec 1 Posting



Introduction of Level Teachers



PRIMARY 5 FORM TEACHERS

CLASS	FORM TEACHERS	
P5 SINCERITY (5S)	MDM CHEW HWEE SHAN	MR SARAVANAN MS ONG SI HAN
P5 PATIENCE (5P)	MS JENNIFER TANG	MS AISHA NASYEERA
P5 RESOURCEFULNESS (5R)	MR ZULKARNAIN	MS LIU YISI
P5 INITIATIVE (5IN)	MDM ROHANA	MR JUSTIN HUAN
P5 GENEROSITY (5G)	MR JULIAN VICTOR	MDM CHRISTINE KWOK
P5 DISCERNMENT (5D)	MDM BELINDA TAN	MDM LEE SHIRUI

Communication with School



Communication **PLATFORMS**

- Student Handbook
- Parents Outreach (newsletter)
- Letters to Parents
- **Parents Gateway**

Get in touch with:

- FTs and subject teachers
- **Year Head**



Our

FOCUS



Secure Individual Confidence

Cohesion

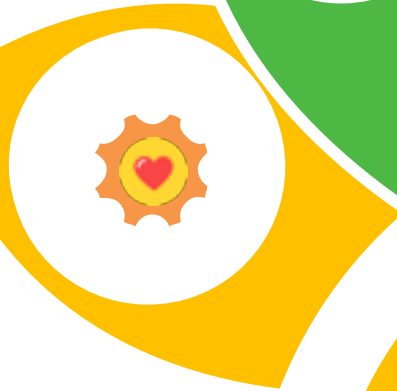
Cope-ability

Significant Citizen

Leader of Self-Worth

Care- nectedness

Creativity



Hallmark of Our Springdalite Graduates





P5

Level Highlights



Level **HIGHLIGHTS**

- P5 Camp
- Learning Journeys (virtual)
- NE Show (tbc)
- Values-In-Action
- Career Awareness Day (virtual)



2021 P5 Camp

2021 P5 Camp

Venue: MOE Changi Coast Adventure
Learning Centre

Dates: 4 – 6 March 2021 (Thu – Sat)

Objectives of P5 Camp

- To develop character, social-emotional competencies & leadership skills as students interact with one another through community living away from home.
- To develop in students a sense of identity & belonging as they forge meaningful friendships through the activities.
- Enable students to enjoy, appreciate and care for the outdoors as they build a personal connection with the environment.
- To provide students with a platform to discover their interests & talents in outdoor & adventure activities.

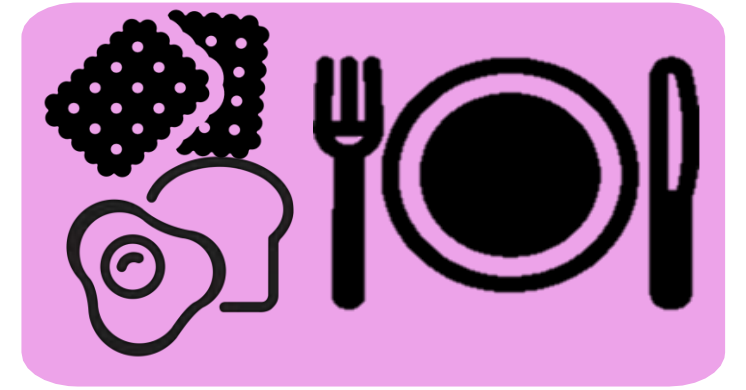
Other information

- Non-residential camp
- Students report to school as usual by **7.30 am** on each day in **PE Attire**
- Students should have their **breakfast at home** before coming to school
- Students return back to school from camp between **4.45-5 pm**
- Last day (Sat, 6 March): Students return to school between **3.45-4 pm**
- Students will only be dismissed from school
- Packing list provided in the letter to parents

Other information

- Students are strongly discouraged to bring their mobile phones
- If students are not able to attend the camp for medical reasons (or any other valid reasons), they should remain at home
- Parents are reminded to complete the Camp Registration Form by latest Mon, 22 Feb 2021

Meals



- Lunch will be provided – Halal.
- Packed Bento Sets.
- Students need not bring snacks (teachers may provide dry snacks like biscuits just in case)
- To indicate in Camp Registration Form
 - Vegetarian
 - Food allergies
 - Other dietary requirements

Examples of **activities**

- Goal-setting activities
- Team-building / problem-solving activities
- Coastal Exploration (short hike)
- Ecology and Habitat learning

P5 CAMP



Team Building and Goal-setting activities

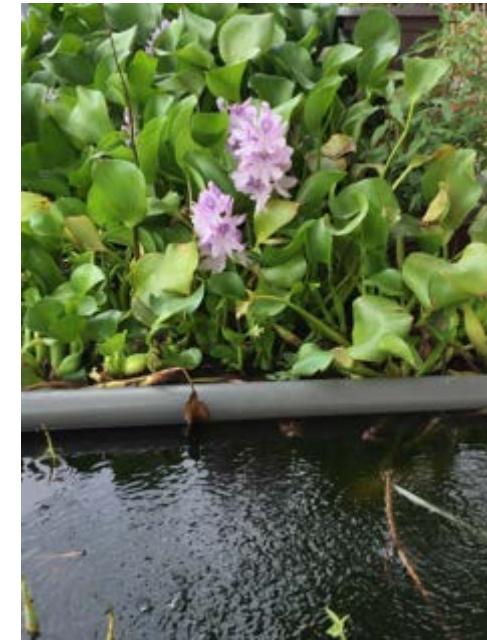


Before We Leaf



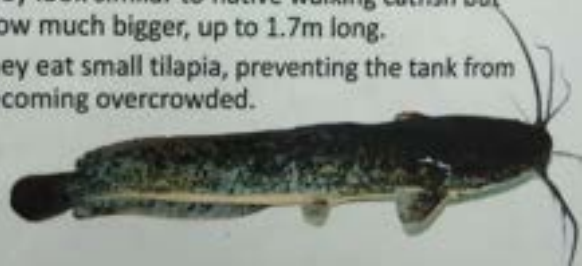
A place-based lesson that allows students to discover the plants in the centre, which culminates in a collaborative project by the students

Changi Mile



African Walking Catfish

- African walking catfish come from Africa and can crawl over land to reach water if the pond they are in dries up. They can breathe air.
- They look similar to native walking catfish but grow much bigger, up to 1.7m long.
- They eat small tilapia, preventing the tank from becoming overcrowded.



Mosquito Fern

- This small floating fern lives with bacteria that convert nitrogen in the air into a form that plants can use to make protein.
- It produces oxygen.
- It is eaten by some fish
- It can cover the surface of the water so fully that mosquitoes cannot breed.



Tilapia

Tilapia fish are locally also called Japanese fish, or Java fish. However, they originally come from Africa. The Dutch brought them from Africa to Java, and the Japanese brought them from Java to Singapore.

They eat mainly plants and reproduce at a high rate, which can cause overcrowding – too many fish in too small a space.



A place-based lesson that engages students in the multiple outdoor classrooms in the centre



Crabbing



A place-based lesson where students explore the area around the centre to learn more about the ecology and habitat of the surroundings



Coastal Exploration





Subject-based Banding



Subject-based Banding

SBB is premised on ability-driven education:

- Student's **aptitude, motivation and performance** in each subject;
- Student's **ability to cope** with a particular subject combination; and
- Whether the subject combination focuses sufficiently on **literacy and numeracy**, and facilitates the student's **articulation to secondary school and beyond**.





Subject-based Banding

At the end of P4:

- Based on your child's results, he/she will be recommended to offer English, Math, Science and Mother Tongue at **Standard** or **Foundation** levels and **Higher** for Mother Tongue only
- **Parents' decision at the end of P4**
- **School's decision at the end of P5**





DSA for **Secondary Schools**



Direct School Admission - Secondary

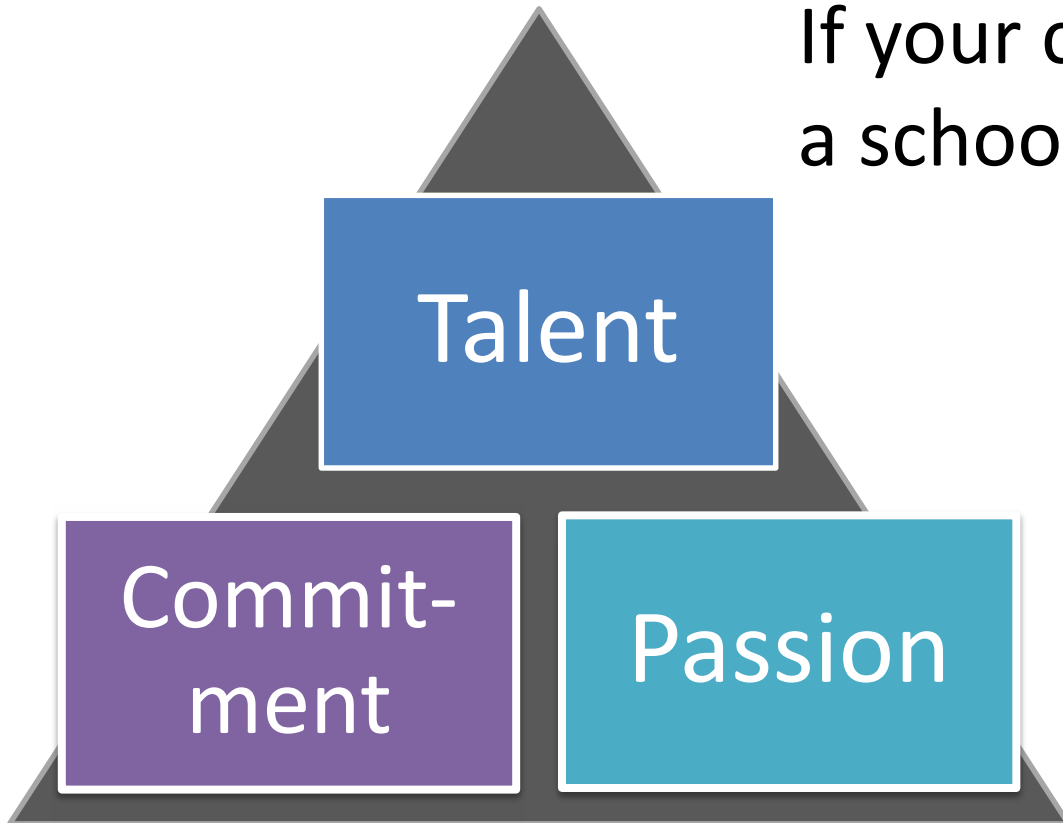
- Secondary schools have flexibility to select a percentage of their students for admission via their own selection criteria
- Selection criteria can include diverse academic and non-academic achievements and talents

Is the DSA-Sec right for my child?

If your child has specific **talents** which a school offers the DSA-Sec in

And is **passionate** about and **committed** to developing his/her strengths and interests

DSA-Sec can support his/her development in that talent area.





Which school should my child apply to?

- Look for a school with **programmes that match your child's strengths and interests**
 - Schools are looking out for students whose interests and talents they can develop further.
 - Learn more about the secondary school's **pace of learning** and overall range of programmes
- **Get the latest information** about what each school offers by:
 - Visiting schools' websites
 - Attending schools' Open Houses to also experience their environments and cultures
 - Visiting the MOE's DSA-Sec website

What are schools looking for?

- The selection process **differs** across schools, and across different DSA-Sec categories.
- Generally, schools are looking for candidates with:

Talent, passion, commitment

- Schools may look at **achievements** and **participation** (e.g. in Junior Sports Academy).
- Schools may also conduct tests, trials or selection camps to identify students with **strengths, or sound fundamentals and potential**, in particular areas.

Strong personal qualities

- Schools may look at **CCA records** and **VIA participation**.
- Schools may also conduct interviews.

Good academic fit

- Schools may look at **primary school results** to ensure students can benefit from the school's pace of learning.

*Students, be sincere, be genuine, and **be yourself** – if you are a good fit for the school, it **will** show.*



Where can I find more information on DSA-Sec?

- Check the **MOE DSA-Sec website** for important dates and timelines, and for information on how DSA-Sec will be conducted.
- The updated 2021 DSA-Sec information will be published around April 2021.
- The MOE DSA-Sec website also contains information on DSA categories and secondary schools offering them.



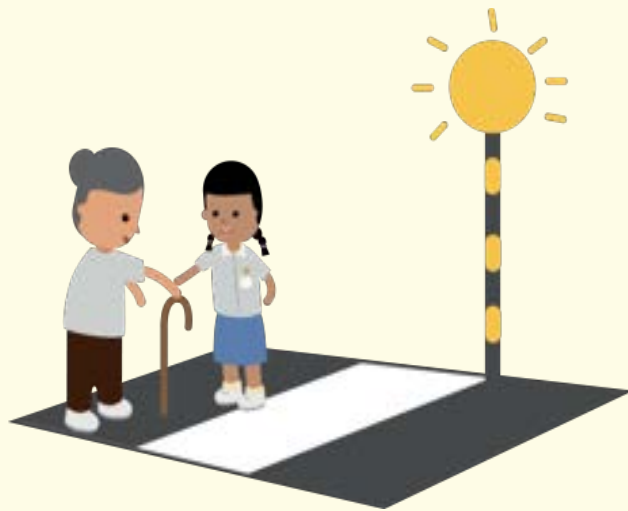
PSLE Scoring & S1 Posting



THE PSLE CHANGES ARE PART OF A BIGGER STORY

Our PSLE scoring changes aim to:

- Reduce fine differentiation at a young age
- Recognise students' level of achievement, regardless of how their peers have done



HOW PSLE SCORING WORKS





WIDER SCORING BANDS


AL	RAW MARK RANGE
1	≥ 90
2	85 – 89
3	80 – 84
4	75 – 79
5	65 – 74
6	45 – 64
7	20 – 44
8	< 20

Reflects a student's individual level of achievement

WIDER SCORING BANDS

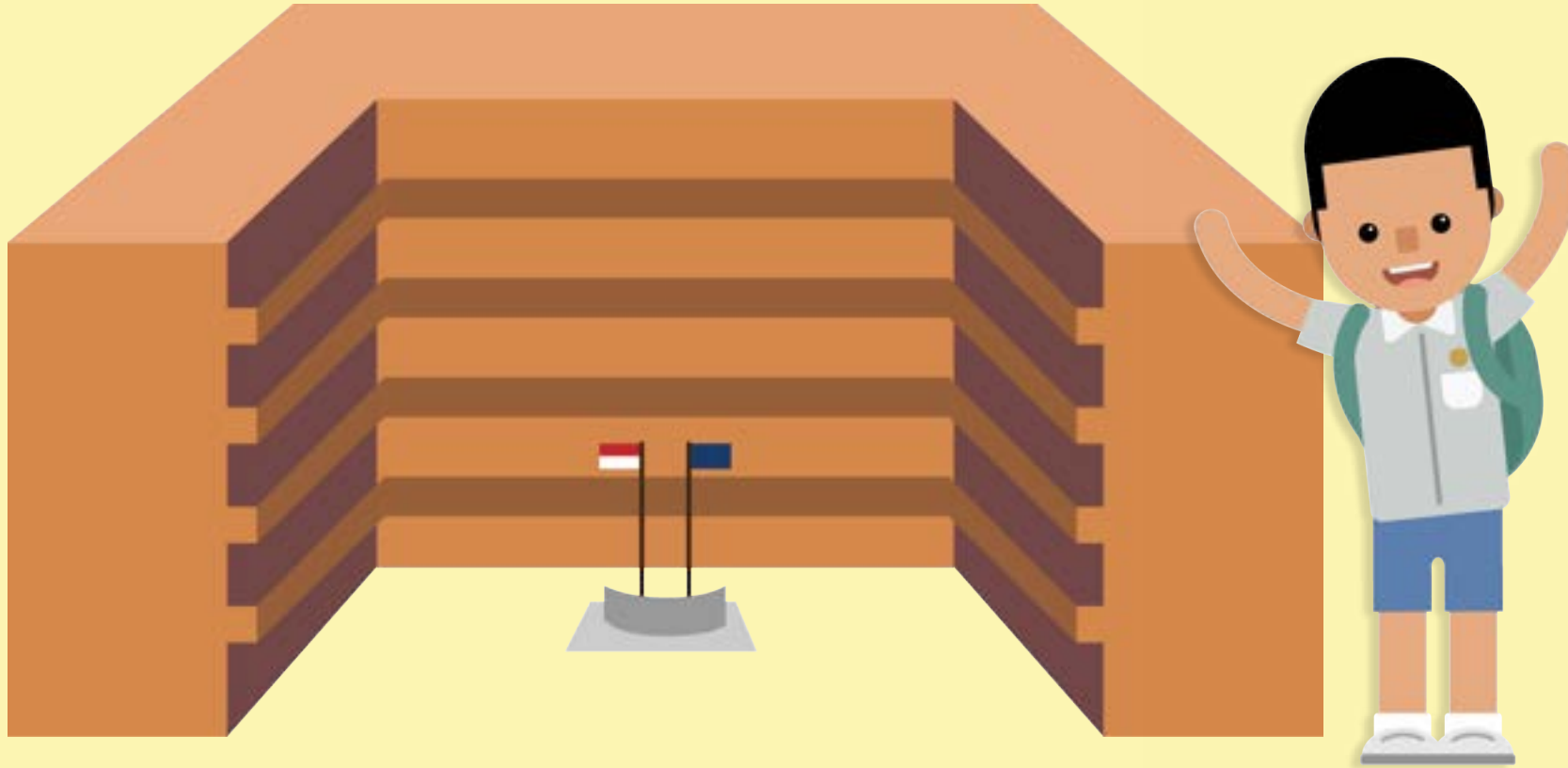
- Obtained by adding the ALs of four subjects.
- PSLE Score ranges from 4 to 32, with 4 being the best.
- Students will be placed in secondary school courses based on their PSLE score – Express, Normal (Academic) or Normal (Technical).

ENGLISH	AL3
MOTHER TONGUE	AL2
MATHEMATICS	AL1
SCIENCE	AL2
PSLE SCORE: 8	



PLACEMENT OUTCOME	PSLE SCORE
EXPRESS	4 – 20
EXPRESS / N(A) OPTION	21 – 22
N(A)	23 – 24
N(A) / N(T) option	25
N(T)	26-30, with AL7 or better in both EL <u>and</u> MA

HOW S1 POSTING WORKS





CHOICE ORDER OF SCHOOLS MATTERS

- Students will be posted to a secondary school **based on academic merit i.e. overall PSLE score.**
- If two or more students with the same PSLE Score vie for the last remaining place in a school, **tie-breakers will be used in the following order:**

1. CITIZENSHIP
2. CHOICE ORDER OF SCHOOLS
3. COMPUTERISED BALLOTING



EXAMPLE:

4 students - Jane, Bryan, Mary and John, are vying for the last places in School A and School B.

Jane
Singapore Citizen



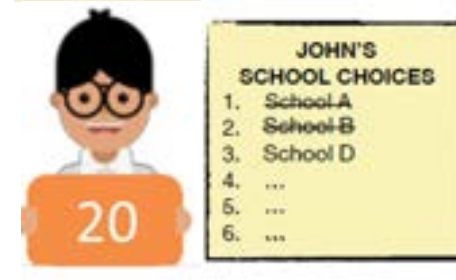
Bryan
Singapore Citizen



Mary
Singapore Citizen



John
Singapore PR



Students with better scores will be posted first

Jane will be posted first as she has a better PSLE score, and will be posted to School A.

As Jane has taken that last place in School A, Bryan, Mary and John, having the same PSLE score, will vie for the last available place in School B.

**Tie-breaker 1:
Citizenship**

Bryan and Mary are Singapore Citizens and will have a priority to enter School B.

John will be tie-broken out as he is a Permanent Resident.
With no places in School B, John will be considered for School D.

**Tie-breaker 2:
Choice order of schools**

As Bryan ranked School B higher than Mary in his choice order of secondary schools, he will be posted to School B.

Since the last place of School B is taken by Bryan, Mary will be considered for School C.

**Tie-breaker 3:
Computerised balloting**

SCORING FOR FOUNDATION LEVEL SUBJECTS





FOUNDATION LEVEL SUBJECT GRADES TO BE LESS FINELY DIFFERENTIATED

- Foundation subject grades will be graded in 3 scoring bands from AL A to C.
- Like standard subject ALs, the foundation subject **ALs** will **reflect a student's level of achievement.**

Foundation Level AL Reflected on Result Slip	Foundation Raw Mark Range
A	75 – 100
B	30 – 74
C	< 30

FOUNDATION LEVEL SUBJECT GRADES

For the purpose of S1 posting, foundation level AL A to AL C will be **mapped to AL 6 to AL 8 of standard level subjects** respectively, to derive a student's overall PSLE score.

Foundation Level AL Reflected on Result Slip	Foundation Raw Mark Range	Equivalent Standard Subject AL	Standard Raw Mark Range
A	75 – 100	6	45-64
B	30 – 74	7	20-44
C	< 30	8	<20

SCORING OF FOUNDATION SUBJECTS FOR S1 POSTING

- PSLE score is the sum of the four AL scores across his/her standard and foundation subjects.
- Students taking foundation subjects are **eligible for the express course, as long as they meet the course placement criteria.**
- With full subject-based banding in secondary schools, students may also take subjects at a higher level for those that they are strong in.

ENGLISH	AL3
FOUNDATION MOTHER TONGUE	ALB
FOUNDATION MATHEMATICS	ALB
SCIENCE	AL5

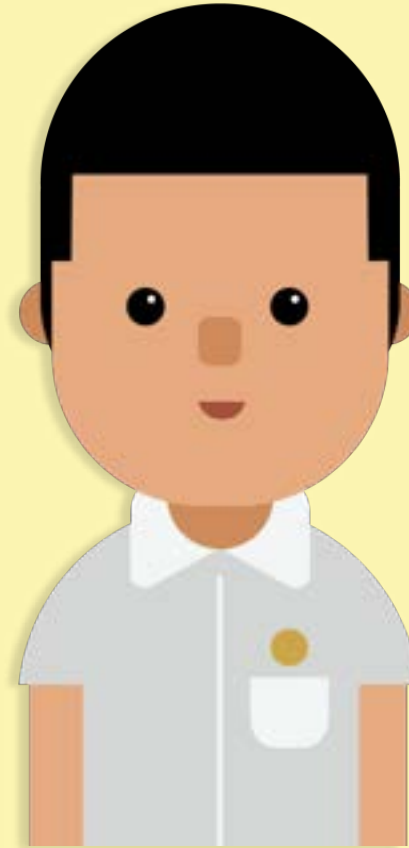
PSLE SCORE: 22



PLACEMENT OUTCOME	PSLE SCORE
EXPRESS	4 – 20
EXPRESS / N(A) option	21 – 22
N(A)	23 – 24
N(A) / N(T) option	25
N(T)	26 – 30, with AL7 or better in both EL <u>and</u> MA



ELIGIBILITY FOR SECONDARY SCHOOL HIGHER MOTHER TONGUE LANGUAGE (HMTL)



ELIGIBILITY FOR HMTL IN SECONDARY SCHOOLS

- The eligibility criteria for taking HMTL is intended to ensure that **students can cope with the higher academic load**, and takes reference from the current criteria.

ELIGIBILITY CRITERIA FOR SECONDARY SCHOOL HMTL

(i) PSLE Score of 8 or better

OR

(ii) PSLE Score of 9 to 14 inclusive; and attain

- AL1 / AL2 in MTL or
- Distinction / Merit in HMTL







- For students who do not meet the above criteria, secondary schools will continue to **have the flexibility to offer HMTL to students, if they are assessed to have high ability and interest** in MTL and are able to take HMTL **without affecting their performance in other subjects.**

USE OF HCL FOR ADMISSION INTO SAP SCHOOLS

New System

The HCL posting advantage for entry to SAP schools will continue

- Students will be ranked taking into account their performance in HCL.
- This posting advantage applies before the tie-breakers for S1 posting.

1st		7	NO HCL
2nd		8	DISTINCTION
3rd		8	MERIT
4th		8	PASS
5th		8	NO HCL
6th		9	DISTINCTION

CHOOSING A SUITABLE SECONDARY SCHOOL



DISCUSS WITH YOUR CHILD

- Consider your child's learning style, strengths and interests when making school choices in order to find a school that would help the child learn and thrive best.
- Discuss the options with the child, with the following considerations:
 - **Values:** What is the school's culture and ethos?
 - **Learning environment:** Is the school's learning environment right for the child?
 - **Distinctive programmes and CCAs:** Can the school support and develop the child's interests?
 - **Location:** Is it too far from home? How will the child get to school?



RESOURCES

PSLE-FSBB Microsite

<https://www.moe.gov.sg/microsites/psle-fsbb/index.html>





Conclusion

- We intend to **work with and build up your child's capacity** over the years
- We **appreciate their active participation** during and **regular attendance** of lessons
- We **continue to strive to partner you in realising your child's potential**



Contact Info

Year Head (Upper Primary):

Mdm Abidah Bibi Marikar



Email

abidah_bibi_marikar@moe.edu.sg



Phone

6315 7600





Thank You!