

# P6 Parents' Briefing

*17 Feb 2023*



# Overview of Briefing

- Our Focus
- Communication with School
- Level Highlights
- PSLE Matters
- DSA for Secondary Schools
- Supporting your Child

**Secure Individual  
Confidence**

**Cohesion**

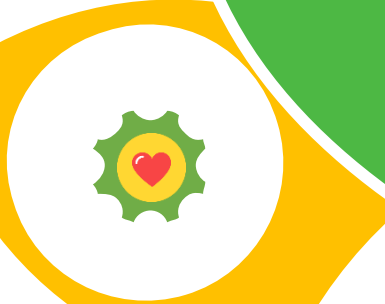
**Significant Citizen**

**Cope-ability**

**Leader of Self-Worth**

**Care-  
nectedness**

**Creativity**



*Hallmark of Our Springdalite Graduates*



# Signature Programmes



Applied Learning  
Programme (**ALP**)

**Critical &  
Inventive  
Thinking**



Learning for Life  
Programme (**LLP**)

**Student  
Leadership**



Character Development  
Programme (**CDP**)

**Character  
Development**

# **Communication** **with School**

# Communication **PLATFORMS**

- Student Handbook
- Parents Outreach (newsletter)
- Letters to Parents
- **Parents Gateway**

Get in touch with:

- FTs and subject teachers
- **Year Head**

# Meeting with Parents

## Parents' Briefing

- **Term 1 Week 7 (17 February 23)**

## Parent Child Teacher Conference (PCTC)

- **Term 2 Week 1 (22 March 23)**

## Parent Teacher Conference (PTC)

- **Term 3 Week 10 (30 August 23)**

**P6**

**Level Highlights**



# P6 Programmes

Timeframe	Activity
Term 1 Week 8 - 10	Learning Journey to ACM
Term 2 Week 2 - 3	PSLE Registration
Term 2 Week 10 (26 May)	Shoot for the Stars (Enrichment Programme)
June Hols (20-22 June)	P6 Remedial Lessons (selected students)
Term 3 (July)	Learning Journey to LKCNHM
Term 3 (August)	P6 Prelims
Term 4 Week 3 - 4	P6 PSLE
Term 4 Week 5 - 10	Post-PSLE Activities

# **PSLE Matters**

# **IMPORTANT** Dates (tentative)

<b>Event</b>	<b>Dates</b>
PSLE Registration	Mon, 03 Apr- Wed, 19 Apr
PSLE Oral	Tue, 15 Aug - Wed, 16 Aug
PSLE Listening Compre	Fri, 15 Sep
Written Papers	Thu, 28 Sep - Wed, 04 Oct
PSLE Results & S1 Posting	First week of Nov hols

Note: (1) The examination timetable will be made available by 2 March 2023

.(2) Please note that dates in this calendar are tentative and may still be subjected.

# PSLE Scoring & S1 Posting

# OVERVIEW

## RECAP

- How the PSLE Scoring System Works
- How the S1 Posting System Works

## SUPPORTING STUDENTS AND THEIR PARENTS IN MAKING INFORMED SCHOOL CHOICES

- Understanding the PSLE Score Ranges
- School Choice Journey



# WHAT IS THE INTENT OF THE PSLE?



**A useful checkpoint at the end of primary school**

**A fair way to determine secondary school posting**



Over the years, we have been changing the education system to help our students discover and develop their strengths and interests, while moving away from an over-emphasis on academic results. Our PSLE Scoring changes reduce an over-emphasis on academic results by:

- 1** Reducing fine differentiation of students' examination results at a young age.
- 2** Recognising a student's level of achievement, regardless of how his/her peers have done.
- 3** Encouraging families to choose secondary schools holistically based on students' strengths, interests and abilities.

# HOW THE PSLE SCORING SYSTEM WORKS



# FROM T-SCORE TO SCORING BANDS

- a) **Reduces fine differentiation of students' examination results at a young age**
- Students with similar scores in each subject are grouped into wider scoring bands measured in 8 ALs.
- b) **Reflects a student's individual level of achievement**
- Students' ALs for each subject reflect their level of achievement, rather than how they have performed relative to their peers.

AL	RAW MARK RANGE
1	≥ 90
2	85 – 89
3	80 – 84
4	75 – 79
5	65 – 74
6	45 – 64
7	20 – 44
8	< 20



# GRADING OF FOUNDATION SUBJECT GRADES

- Foundation subject grades are graded in scoring bands from **AL A to C**.
- To derive a student's overall PSLE Score for S1 Posting, AL A to AL C for Foundation level subjects are **mapped to AL 6 to AL 8 of Standard level subjects respectively**.
- Similar to the PSLE T-score system, this mapping is based on the learning and assessment load of the subjects, and informs students of how ready they are for the curriculum in secondary school.

FOUNDATION LEVEL AL	FOUNDATION RAW MARK RANGE	EQUIVALENT STANDARD LEVEL AL
A	75 – 100	6
B	30 – 74	7
C	< 30	8

# 4 SUBJECT ALs WILL BE ADDED TO FORM THE OVERALL PSLE SCORE

- The PSLE Score can range from 4 to 32, with 4 being the best.
- Students are placed in secondary school courses based on their PSLE Score – Express, Normal (Academic) or Normal (Technical).

ENGLISH LANGUAGE	AL 3
MOTHER TONGUE LANGUAGE	AL 2
MATHEMATICS	AL 1
SCIENCE	AL 2
<b>PSLE SCORE: 8</b>	

PLACEMENT OUTCOME	PSLE SCORE
EXPRESS	4 – 20
EXPRESS / N(A) OPTION	21 – 22
N(A)	23 – 24
N(A) / N(T) OPTION	25
N(T)	26 – 30, with AL 7 or better in both EL <u>and</u> MA

*Express, N(A) and N(T) courses will be phased out by 2024.*

# ELIGIBILITY CRITERIA FOR HIGHER MOTHER TONGUE LANGUAGE (HMTL)

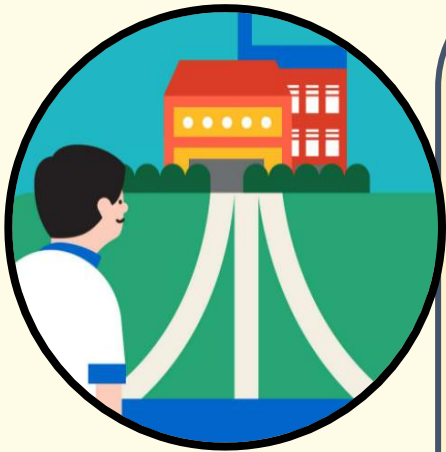
## ELIGIBILITY CRITERIA FOR HMTL

- (i) An overall PSLE Score of 8 or better**
- or**
- (ii) An overall PSLE Score of 9 to 14 (inclusive); and attain**
  - **AL 1 / AL 2 in MTL or**
  - **Distinction / Merit in HMTL**

- The eligibility criteria for taking HMTL takes reference from past criteria.
- It ensures students can cope with the higher academic load.
- Secondary schools continue to have the flexibility to offer HMTL to students who do not meet the criteria if they:
  - have high ability and interest in MTL, and
  - are able to cope with the learning load required.

# FULL SUBJECT-BASED BANDING (FULL SBB)

- Full SBB in secondary schools in 2024.
- This is in line with the changes to PSLE Scoring to recognise each student's own level of achievement and encourage them to choose secondary schools that fit their strengths and interests.
- Full SBB aims to further nurture the joy of learning and develop multiple pathways to cater to the different student profiles. Through Full SBB, we want students to:



- have greater ownership of their education, and learn each subject at the level that best caters to their overall strengths, interests and learning needs, and
- have more opportunities to interact with friends of different strengths and interests.
- not be held back by negative self-concepts and labelling.
- have increased access to post-sec pathways, while having strong fundamentals in their subjects so that they are able to thrive in the pathway they choose.

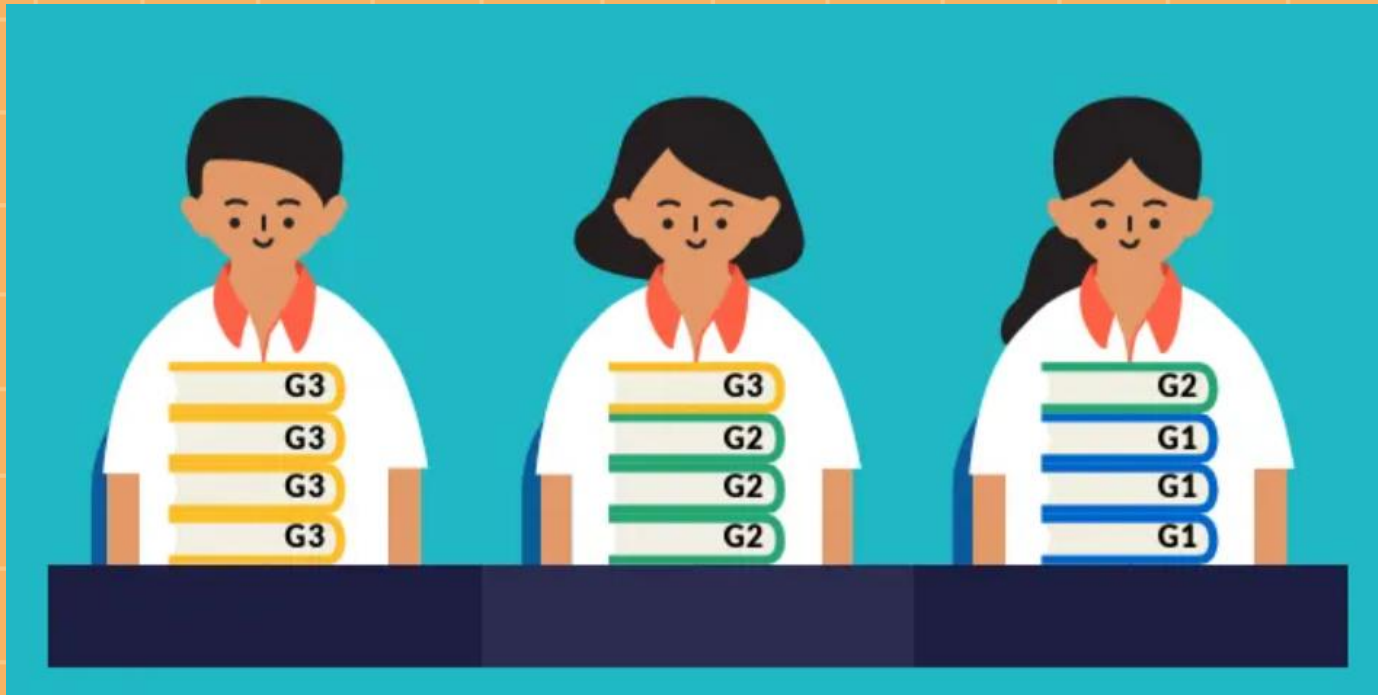
# FULL SUBJECT-BASED BANDING (FULL SBB)

- The following are changes that students will experience from Full SBB:

- Removal of Express, N(A) and N(T) courses
- Mixed form classes
- Common Curriculum subjects
- Offering subjects at a more demanding level, including Humanities subjects
- Common National Examinations
- Post-secondary Admissions *(More information will be made available at a later date.)*



# Full Subject-Based Banding (Full SBB)



- At the start of Secondary 1, students will take a combination of *G1/2/3* subjects based on their PSLE scores, suited to their pace of learning.
- Thereafter, their subject levels will be based on their strengths and interests.

# FULL SUBJECT-BASED BANDING (FULL SBB) TIMELINE

Link to PSLE-FSBB Microsite



<https://go.gov.sg/pslefsbb>



**2020**

Full SBB pilot commenced in 28 secondary schools. Feedback from pilot schools has been positive.



**2022**

Full SBB will continue to be rolled out to more schools in phases.



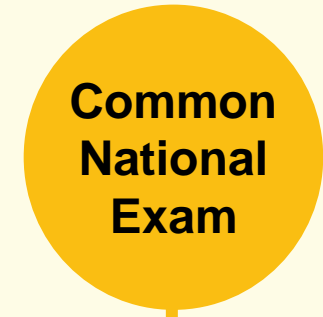
**2023**



**2024**

From 2024,

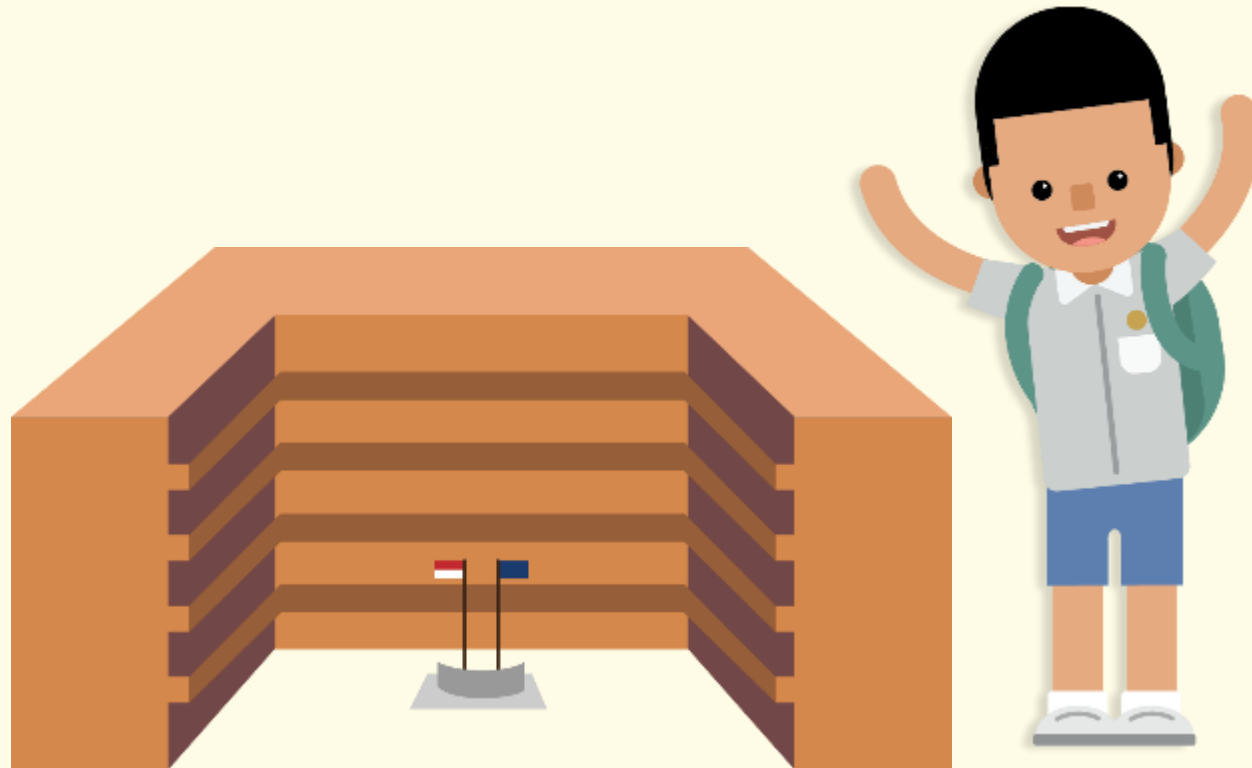
- There will no longer be Express, N(A) and N(T) courses.
- Students will be able to study subjects at different levels that suit their interests, strengths and learning needs.



**2027**

From 2027, students will sit for the common national examination and receive a new national certification with subjects at different levels.

# HOW THE S1 POSTING SYSTEM WORKS





# CHOICE ORDER OF SCHOOLS MATTERS MORE

- Students continue to have **six choices** in selecting their secondary schools.
- Similar to past years, students continue to be posted to a secondary school based on **academic merit, i.e., PSLE Score**, and their **school choice order**.
- If there are two or more students with the same PSLE Score vying for the last remaining place(s) in a school, the following tie-breakers will be used in the following order:
  1. **CITIZENSHIP**
  2. **CHOICE ORDER OF SCHOOLS (New tie-breaker from 2021 onwards)**
  3. **COMPUTERISED BALLOTING**
- The new tie-breaker based on school choice order recognises the different considerations that families have in making school choices.








# Tie-breakers

## in the new S1 Posting System

Tie-breakers are used only if there are two or more students with the same PSLE Score vying for the last available place(s) in a school.

Here's a simplified example.

5 students are vying for the last places in the schools of their choice.

<b>Jane</b> Singapore Citizen 16 pts	SCHOOL CHOICES: 1) Sch A 2) Sch ... 3) Sch ... 4) Sch ...	
<b>Bryan</b> Singapore Citizen 20 pts	SCHOOL CHOICES: 1) Sch B 2) Sch ... 3) Sch ... 4) Sch ...	
<b>Mary</b> Singapore Citizen 20 pts	SCHOOL CHOICES: 1) Sch A 2) Sch B 3) Sch C 4) Sch ...	
<b>Alan</b> Permanent Resident 20 pts	SCHOOL CHOICES: 1) Sch A 2) Sch B 3) Sch D 4) Sch ...	
<b>Rina</b> Permanent Resident 20 pts	SCHOOL CHOICES: 1) Sch A 2) Sch B 3) Sch D 4) Sch E	



Students with better scores will be posted first

Jane has a better PSLE score. She will be posted first, to **School A**.



Tie-breaker #1: Citizenship

Bryan and Mary are Singapore Citizens. They will have priority to enter **School B**.



Bryan, Mary, Alan and Rina have the same score.

As Jane has taken the last available place in School A, Bryan, Mary, Alan and Rina will vie for the last available place in their next choice, **School B**.



Alan and Rina will be tie-broken out as they are Permanent Residents. They will be considered for their next choice, **School D**.



Tie-breaker #2: Choice order of schools

Because Bryan ranked School B higher than Mary, he will be posted to **School B**.



Since Bryan has taken the last place in School B, Mary will be posted to **School C**.



Alan and Rina have both ranked School D as their third choice. They will go through computerised balloting to vie for the last remaining place in **School D**.



Tie-breaker #3: Computerised balloting

Through computerised balloting, Alan is posted to **School D**.



Since Alan has taken the last place in School D, Rina will be posted to her fourth choice, **School E**.



# PSLE SCORE RANGES FOR INDIVIDUAL SECONDARY SCHOOLS



# PSLE SCORE RANGES FOR ALL SECONDARY SCHOOLS

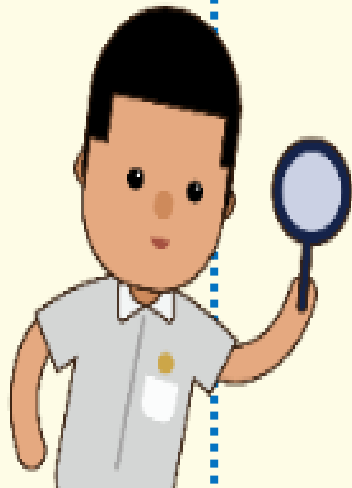
- Use the PSLE Score ranges as a reference alongside other important factors, such as:
  - the school's distinctive programmes,
  - Co-Curricular Activities (CCA),
  - culture,
  - ethos, and
  - proximity to home when shortlisting school choices that would best fit a student's educational needs.

# PSLE SCORE RANGES FOR ALL SECONDARY SCHOOLS

- The 2022 PSLE Score ranges for individual secondary schools will be available for your reference on <https://moe.gov.sg/schoolfinder> and <https://go.gov.sg/exploreschools> by end March 2023. They reflect the PSLE scores of the student posted into these schools at the 2022 S1 Posting Exercise.
- A school's PSLE Score range (including Cut-Off-Point) for a particular year is not pre-determined before the posting, and may vary from year to year, depending on the cohort's PSLE results and their school choices in that year's S1 Posting Exercise.

# PSLE SCORE RANGES FOR ALL SECONDARY SCHOOLS

## SchoolFinder Tool



<https://www.moe.gov.sg/schoolfinder>

## MySkillsFuture Student Portal (Primary)



<https://go.gov.sg/exploreschools>

# PSLE SCORE RANGES FOR INDIVIDUAL SECONDARY SCHOOLS

The PSLE Score range refers to the PSLE Score of the first and last student admitted to a particular school in the previous year via the S1 Posting Exercise. This shows the range of student profiles who enter each school.

## Example

XX Secondary School  
PSLE Score range of 2021

Express	15	20
Normal (Academic)	21	24
Normal (Technical)	25	28

PSLE Score of the first student posted into the school in the respective courses

PSLE Score of the last student posted into the school in the respective courses [i.e., the school's Cut-Off Point (COP)]

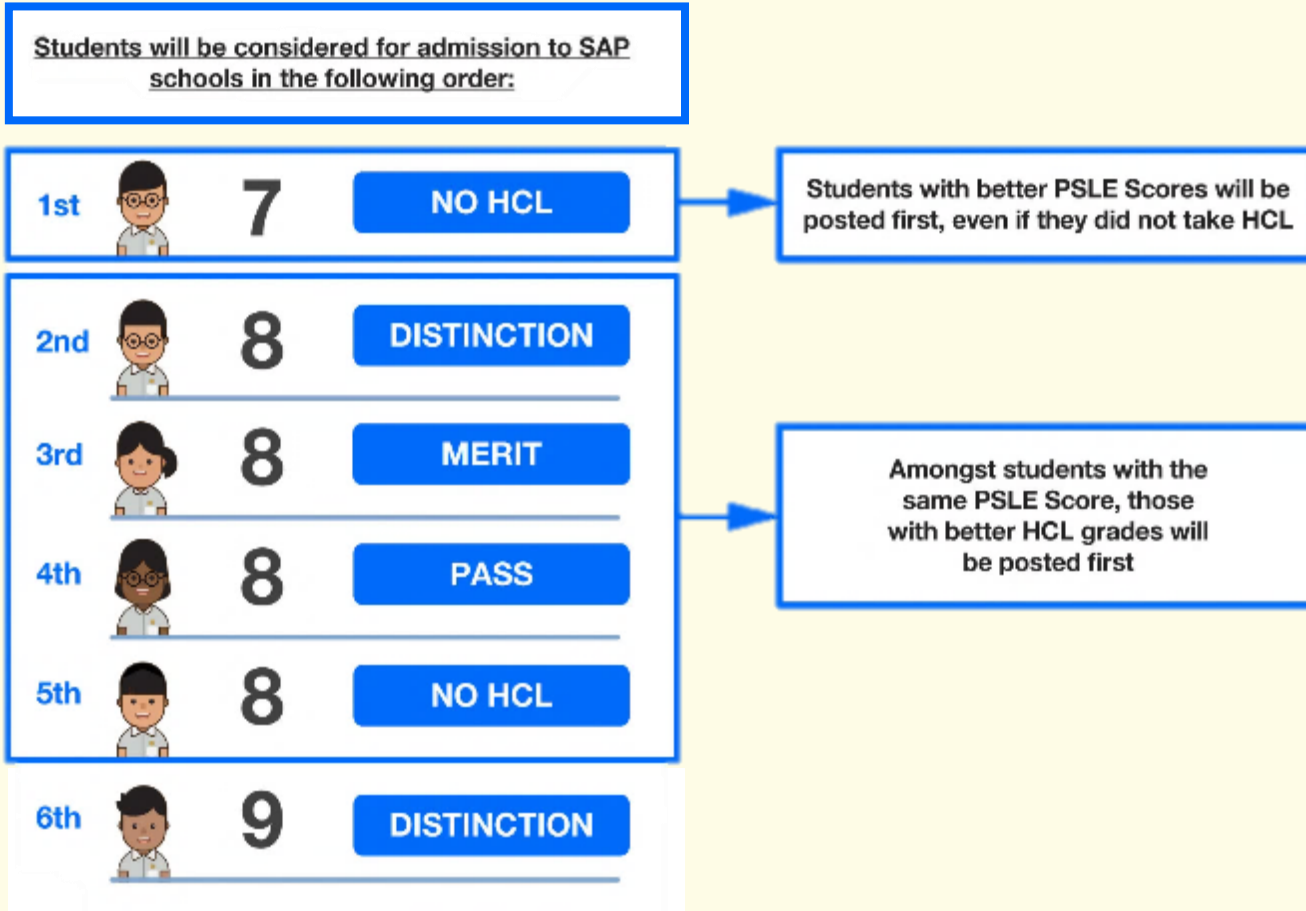
# USE OF HIGHER CHINESE LANGUAGE (HCL) FOR ADMISSION INTO SPECIAL ASSISTANCE PLAN (SAP) SCHOOLS





# HCL POSTING ADVANTAGE FOR ENTRY TO SAP SCHOOLS WILL CONTINUE

Students who obtained a Distinction/Merit/Pass for HCL at the PSLE and an overall PSLE Score of 14 or better will receive a posting advantage when applying to SAP schools.



- Students' HCL results are denoted as 'D' (Distinction), 'M' (Merit) or 'P' (Pass).
- Students who obtain (i) a Distinction / Merit / Pass in HCL and (ii) a PSLE Score of 14 or better are eligible for posting advantage to SAP schools.
- Students are ranked taking into account their performance in HCL.
- This posting advantage applies before the tie-breakers for S1 Posting.

# EXAMPLE OF AN SAP SCHOOL'S PSLE SCORE RANGE

While students need not take HCL to enter SAP schools, students who pass HCL receive a posting advantage for admission. To reflect this, the PSLE Score ranges of SAP schools include the HCL grades of the first and last student admitted in the previous year via S1 Posting.

## Example

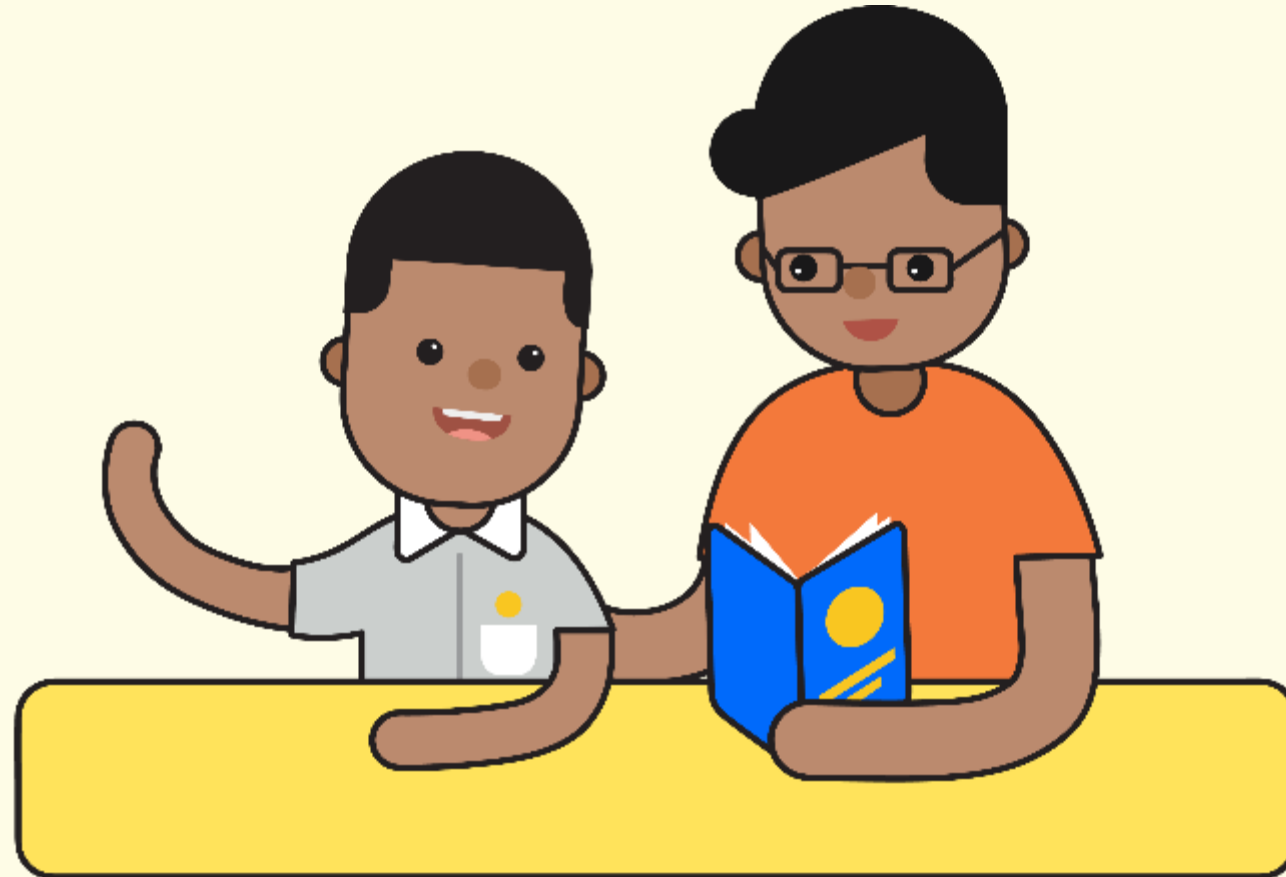
XX Secondary School  
PSLE Score range of 2021

Express	5 (D) – 12 (P)
Normal (Academic)	
Normal (Technical)	

PSLE Score and HCL grade of the first student posted into the school in the Express course

PSLE Score and HCL grade of the last student posted into the school in the Express course [i.e. the school's Cut-Off Point (COP)]

# CHOOSING SUITABLE SECONDARY SCHOOLS WITH YOUR CHILD



# SCHOOL CHOICE JOURNEY

- The PSLE Score ranges are a **useful reference point** for parents and students to consider secondary schools.
- Use this information, together with other **important factors** such as the secondary schools' distinctive programmes, CCAs, ethos and cultures, to shortlist schools that would best fit the educational needs of the student.

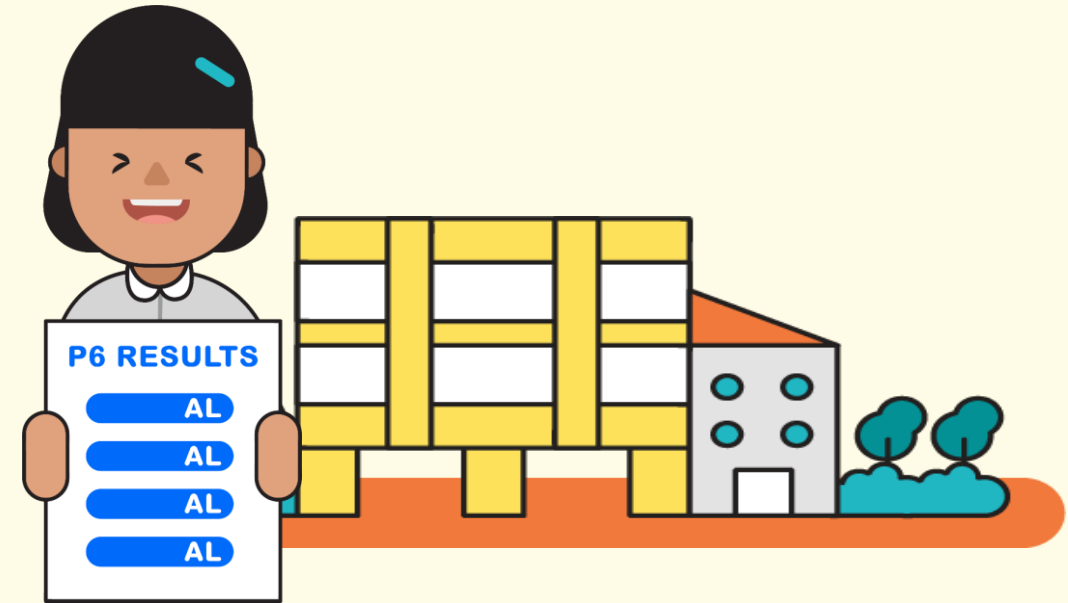


# SCHOOL CHOICE JOURNEY

- If your child has specific talents and strengths beyond the PSLE (e.g. areas such as sports, performing arts and leadership), consider the **Direct School Admission-Secondary (DSA-Sec)** as an alternative admission pathway to access secondary schools that have talent development programmes in these areas.



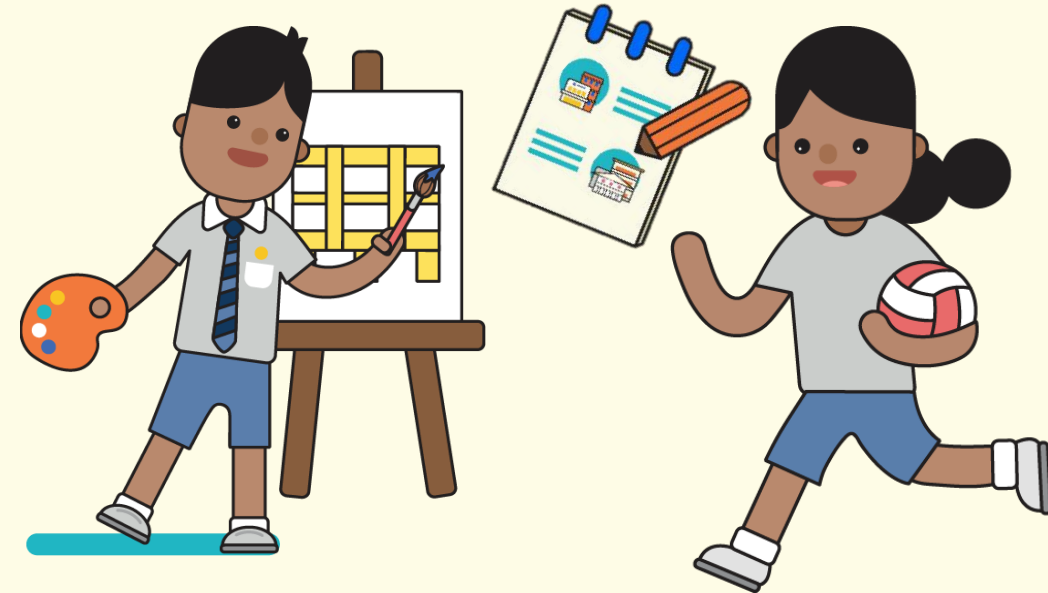
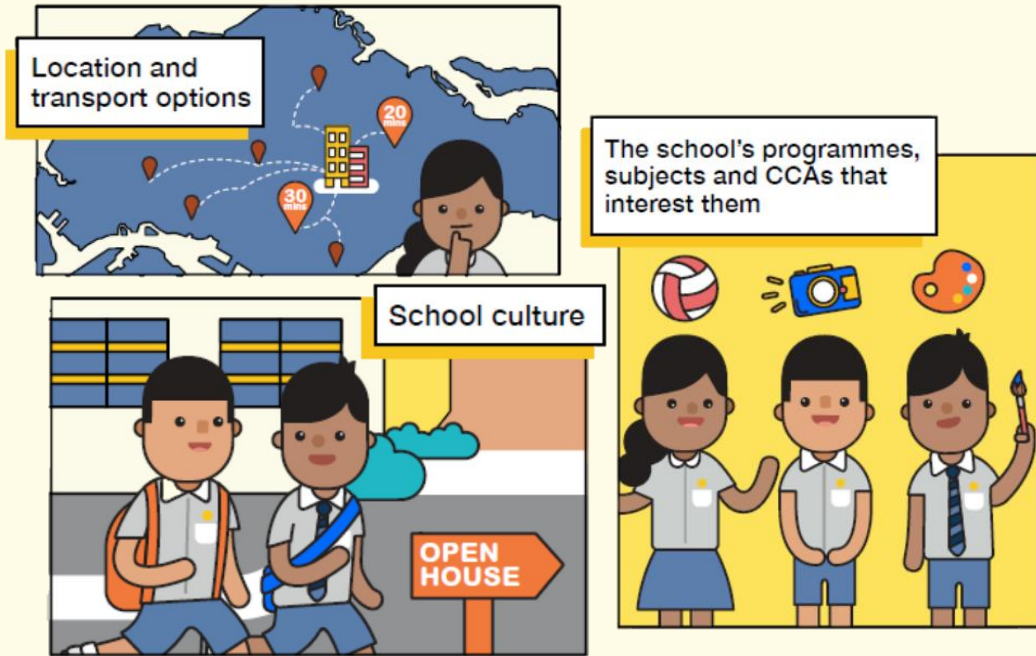
# PREPARING FOR THE S1 POSTING EXERCISE



Use all 6 options with a range of Cut-off Points as this will increase your child's chances of being posted to a school of their choice.

Take reference from schools' PSLE Score ranges, which serves as a guide for you and your child to shortlist school choices. Consider at least 2-3 schools where your child's PSLE Score is better than the school's Cut-off Point.

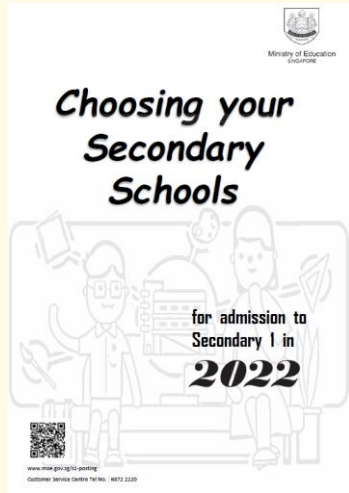
# PREPARING FOR THE S1 POSTING EXERCISE




Shortlist schools that offer programmes that cater to the your child's strengths and interests, and that provide suitable learning environments.


Rank your child's preferred school higher in the school choice order. This will increase your child's chances of being posted to that school, if tie-breakers are required.

# PREPARING FOR THE S1 POSTING EXERCISE



**SCHOOL  
FINDER**  
*My SKILLS future*

- Release of **S1 Posting** results 

- Release of **PSLE** results
- Submission of **Secondary 1 Option Form** 





# TIPS FOR PARENTS!

Be open and flexible when discussing your child's preferences, needs and choices.

Manage your own expectations and do not project these expectations onto your child.

Have regular conversations with your child to understand more about his/her interests and aspirations.



Affirm your child and offer support when he/she shares his/her plans with you.

# FIND OUT MORE ON THE PSLE-FSBB MICROSITE!



<https://go.gov.sg/pslefsbb>



# OTHER RESOURCES

1

SchoolFinder Tool

SCHOOL FINDER



<https://go.gov.sg/secschoolfinder>

2

“Welcome to Secondary School” video



<https://go.gov.sg/welcome-to-secondary-school>

3

Secondary School Education Booklet



<https://go.gov.sg/pse-sec-sch-brochure>

4

ECG Parent Guide



<https://go.gov.sg/parent-guide>

# **DSA for Secondary Schools**

# Direct School Admission - Secondary

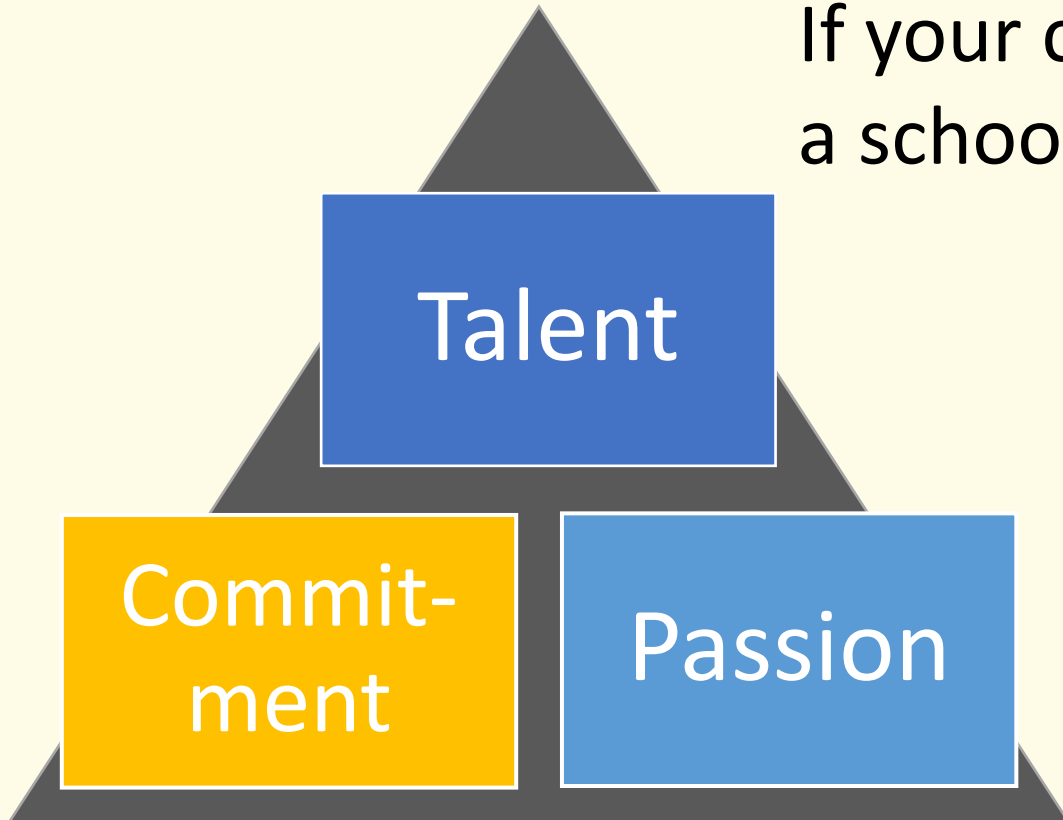
- Secondary schools have flexibility to select a percentage of their students for admission via their own selection criteria
- Selection criteria can include diverse academic and non-academic achievements and talents

# Is the DSA-Sec right for my child?

If your child has specific **talents** which a school offers the DSA-Sec in

And is **passionate** about and **committed** to developing his/her strengths and interests

DSA-Sec can support his/her development in that talent area.



# Which school should my child apply to?

- Look for a school with **programmes that match your child's strengths and interests**
  - Schools are looking out for students whose interests and talents they can develop further.
  - Learn more about the secondary school's **pace of learning** and overall range of programmes
- **Get the latest information** about what each school offers by:
  - Visiting schools' websites
  - Attending schools' Open Houses to also experience their environments and cultures
  - Visiting the MOE's DSA-Sec website

# DSA-Sec Application Portal

- Students will apply for DSA through a centralised **DSA-Sec Application Portal**, using a common application form.



# What is the timeline for DSA-Sec?

Apply for DSA-Sec through [DSA-Sec Application Portal](#).

Rank your offers, if you receive offers from multiple schools

Mid June - Late August

Late-November

Early May - Early June  
(4 weeks)

Late-October

Shortlisting and selection by secondary schools. Each secondary school has different selection criteria for its categories and programmes. Schools will inform you of the selection outcome **by Aug.**

You will know whether you have been allocated to a school through the DSA-Sec, at the same time you receive your PSLE results.

# What are schools looking for?

- The selection process **differs** across schools, and across different DSA-Sec categories.
- Generally, schools are looking for candidates with:

## Talent, passion, commitment

- Schools may look at **achievements** and **participation** (e.g. in Junior Sports Academy).
- Schools may also conduct tests, trials or selection camps to identify students with **strengths, or sound fundamentals and potential**, in particular areas.

## Strong personal qualities

- Schools may look at **CCA records** and **VIA participation**.
- Schools may also conduct interviews.

## Good academic fit

- Schools may look at **primary school results** to ensure students can benefit from the school's pace of learning.

# What are the possible DSA-Sec outcomes?

- **Confirmed Offer (CO)** → Your child has a place reserved in the school, as long as his/her PSLE results qualify him/her for a course the school offers (i.e. Express, Normal (Academic) or Normal (Technical)).
- **Wait List (WL)** → Your child will be given a place in the school if other students with Confirmed Offers do not take up those offers, and if his/her PSLE results qualify him/her for a course the school offers. Allocation will be based on students' rank on the school's Wait List.
- **Unsuccessful** → Your child has not been given a place in the school. If your child still wishes to enter the schools he/she applied for, he/she can apply through the S1 Posting process using his/her PSLE results.

# If my child have a DSA-Sec Confirmed Offer, does it mean that his/her PSLE results will not matter?

- Your child's PSLE results will still be **used to determine the secondary school course he/she is eligible** for (i.e. Express, Normal (Academic), Normal (Technical))
- Even if he/she has a Confirmed Offer, he/she **must qualify for a course offered by the school** to be admitted to the DSA-Sec school.

**Example:** Leo has a **Confirmed Offer** from Courage Secondary, which offers **the Express Course only**. However, Leo's PSLE results **qualify him for the Normal (Academic)** course. Hence, Leo will **not be able** to go to Courage Secondary through DSA-Sec. If he is not allocated a place in another DSA-Sec school whose CO/WL offer he had accepted at the School Preference stage, he will participate in the S1 Posting.

# Where can I find more information on DSA-Sec?

- Check the **MOE DSA-Sec website** for important dates and timelines, and for information on how DSA-Sec will be conducted.
- The updated DSA-Sec information will be published around April.
- The MOE DSA-Sec website also contains information on DSA categories and secondary schools offering them.

# Supporting your Child

# Supporting Our Students' Social-Emotional Well-being

- Form Teacher Guidance Period and pupils' Grow and Glow Journal
- Motivational/Values Talk by Key Personnel
- Chit-chat sessions by Form teachers
- Support from School Counsellor

# How to Support Your Child

- Ensuring that the children **spend their time wisely** and do monitor their **stress level**
- **Role modelling** so that the children have a more positive attitude to reading
- Monitoring **external sources of help** (if any) and check that they are value-adding to your child's learning



# Working with YOU

- **Update us on what is happening** to your child at home so that we can provide the necessary support
- We will do our best to **support your child academically and where possible emotionally** and would **appreciate your support and understanding**
- **Be consistent in our messaging**

# Conclusion

- We intend to **work with and build up your child's capacity** over the years
- We **appreciate their active participation** during and **regular attendance** of lessons
- We **continue to strive to partner you in realising your child's potential**

# Contact Info

Year Head (Upper Primary):

**Mdm Abidah Bibi Marikar**



Email

**abidah\_bibi\_marikar@moe.edu.sg**



Phone

**6315 7600**



# THANK YOU

